

The Role of *Perlindungan Anak Terpadu Berbasis Masyarakat* (PATBM) Groups in Preventing and Handling Child Labour in the Informal Sector

Muhammad Aksha Wahda^{1*}, Sudirman²

¹Universitas Negeri Makassar

²Yayasan Wadjo

Received: 5 November 2023
Revised: 10 November 2023
Accepted: 25 November 2023

Abstract

This article describes the role of the Community-Based Integrated Child Protection (PATBM) group in preventing and handling child labour in the informal sector. This research is a qualitative method with data collection through in-depth interviews, non-participant observation, and literature review related to the object of research. This article will explain about (a) the concept of child labour and the problems faced, (b) how the prevention and handling mechanisms carried out by PATBM. This article explains that the lack of supervision in the informal sector causes children to be involved in various jobs that interfere with the fulfillment of children's rights and threaten their safety. By using the CLMRS system, the PATBM group in conducting supervision has succeeded in identifying various cases of child labour in the informal sector and remediating child labour.

Keywords: Child Labour, Child Protection, PATBM

(*) Corresponding Author: aksha.wahda@unm.ac.id

How to Cite: Wahda, M., & Sudirman, S. (2023). The Role of *Perlindungan Anak Terpadu Berbasis Masyarakat* (PATBM) Groups in Preventing and Handling Child Labour in the Informal Sector. *International Journal of Education, Information Technology, and Others*, 6(4), 13-22. <https://doi.org/10.5281/zenodo.10258318>

INTRODUCTION

Child labour is a common problem in developing countries or countries with per capita income below international standards. It is not a new problem and is a serious issue that must be addressed immediately because it has an impact on the growth and development process of children. Children who are involved as child labourers are generally unable to get their rights as children, especially to learn, play, and live in a healthy environment. They spend a lot of their time working and it is possible that they are in dangerous and risky conditions for their growth and development.

Attention to child labour arose from concerns about the large number of children working as factory workers in England in the 19th century (Morrow, 2015), after which child labour has been conceptualized as a social problem. The definition of child labour refers to or is born from the social construction of each group of society, so the definition is quite diverse. From a social science perspective, child labour is conceptualized as work that takes children away from their rights and is harmful to children. In general, the global community refers to the definition of child labour that has been compiled by the International Labour Organization (ILO). Each country creates its own definition but still refers to the basic concepts set out by the ILO.

The causes of child labour are often faced with the poor conditions of children and their families (Mizushima, 2021). This condition makes children a

labour force whose wages are needed to cover family needs that are difficult for their parents to meet, even child labour contributes to increasing family income (Ango et al., 2022). The causes of child labour are not only poverty, but poverty can be said to be the main factor. The causes of child labour also come from the social norms prevailing in society, and the experience of parents who care for children.

In 2021, the number of child labourers increased to 160 million and 79 million were involved in hazardous work (ILO and UNICEF, 2021). Child labour is spread across several sectors, agriculture contributes to absorbing child labour by 70%, the service sector by 70%, and the industrial sector by 10%. As an agricultural country, Indonesia makes the agricultural sector a productive branch of the economy. BPS data in 2022 showed that 29.96 percent of Indonesia's labour force worked in the agriculture, forestry, and fisheries sectors. The agricultural sector (including plantations) has a considerable challenge, namely related to child labour. Based on SAKERNAS in 2020, approximately 9 out of 100 children aged 10-17 years work in the informal sector, and 3 out of 4 children are unpaid workers.

Children involved as child labourers in the agricultural sector are mostly found in agricultural areas and plantations, either privately owned or plantations controlled by corporations. In 2021, the ministry stated that 4 million children were trapped in the worst forms of child labour. The worst forms of child labour in rural areas are generally in the agricultural sector, including spreading chemical fertilisers and pesticides, working with dangerous equipment, and becoming porters, and we can also find children working in community mining. While in urban areas, child labourers are mostly found working in the service sector such as shopkeepers, waiters in restaurants, construction workers, and domestic workers. The position of child labourers in urban areas is not much different from those in rural areas or agricultural areas. They are also faced with various kinds of work activities that are risky and endanger the safety of children.

Efforts to prevent and deal with child labour continue to be pursued by various parties. The ILO developed Child Labour Monitoring (CLM), further developed by several non-governmental organizations such as Save the Children, and Nestle with the International Cocoa Initiative (ICI). All of them take a role to reduce the number of children and the impact of child labour. The monitoring and remediation system developed places communities and community organizations at the forefront of preventing and eliminating child labour.

RESEARCH METHOD

This is a qualitative research. Data and information were collected by observing, interviewing, analysing documents and literature related to the research topic. Observation was carried out to observe the daily activities of PATBM administrators both in handling cases and in carrying out activities to raise public awareness on the protection and fulfilment of children's rights. Interviews were conducted to obtain information from the community and PATBM administrators by asking questions to explore their experiences and knowledge related to the research topic. In addition, documents and literature such as the Convention on the Rights of the Children, PATBM guidelines and some literature containing information on the prevention and response to child cases were analysed.

RESEARCH RESULTS AND DISCUSSION

The concept of Child Labour and its problems

Child labour has become a global concern due to the adverse effects it can have on children. The term 'child labour' is often defined as work that deprives children of their childhood, potential and dignity, and that is harmful to physical and mental development (ilo.org/ipec). In Indonesia, child labour is defined as children working below the minimum age for employment. The Indonesian government's attention to the issue of child labour became serious after the 1997 economic crisis. Through Law No. 20 of 1999 and Law No. 1 of 2000, the government ratified ILO Convention No. 138 on the minimum age for employment and Convention No. 182 on the prohibition and immediate elimination of the worst forms of child labour. Within the regulatory framework, the minimum age for children to work is 13 years old to do light work as long as it does not interfere with physical, mental and social development and health. For 15 years old to before 18 years old, they are allowed to do regular work for a maximum of 8 hours per day and 40 hours per week.

Table 1.
Age Limits of Child Labour in the Indonesian Legal Framework

child's age	Occupations exempt from minimum age requirements	Type of work		
		Light work. (Maximum 3 hours per day and 15 hours per week.)	Regular work that does not cause harm. (Maximum 8 hours per day and 40 hours per week)	The worst form of child labour. (including hazardous work)
< 13 years	Not Child Labour	Child Labour	Child Labour	Child Labour
13-14 years	Not Child Labour	Not Child Labour	Child Labour	Child Labour
15-17 years (youth workers)	Not Child Labour	Not Child Labour	Not Child Labour	Child Labour

Child labour in many cases is often faced with the perception that child labourers are children who work because their families are poor (Cigno, 2016), although poverty is a major factor in child labour but not people who are in poverty let their children become child labourers. This suggests that there are other factors. In another case in a coffee plantation area in Ethiopia, child labour was correlated with family income levels. However, child labour also affects the loss of children's right to education due to reduced school attendance (Ango et al., 2022), so solving

the problem of poverty is likely to reduce the problems caused by child labour. The case of child labour in agricultural areas of Mozambique illustrates that labour shortages lead to an increase in child labour, as children are used to make up for labour deficits (Fumagalli & Martin, 2023).

The report "Child Labour: Global Estimates 2020, Trends and the Way Forward" (ILO and UNICEF, 2021) shows that, of the estimated 160 million child labourers in the world in 2020, 112 million are in agriculture. In Indonesia, based on BPS data, the number of child labourers in 2021 is 1.05 million people, the percentage of boys is always higher than that of girls. In the period from 2019 to 2021, the proportion of child labour in rural areas is higher than in urban areas, in 2021 there were 2.29% of child labourers in rural areas and 1.43 in urban areas.

Child labour in the agricultural sector is at least faced with threats to safety, health, welfare, and the non-fulfilment of several children's rights. Threats to safety are primarily for those in hazardous work situations, such as children's involvement in the use of pesticides and other chemicals, children's involvement in harvesting, and the use of sharp objects in agricultural activities, as well as children who are forced to work for long periods of time (Hurst, 2022).

Efforts to stop child labour are confronted with the cycle of child labour, understanding that poverty is not a cause but can also be a result of child labour.

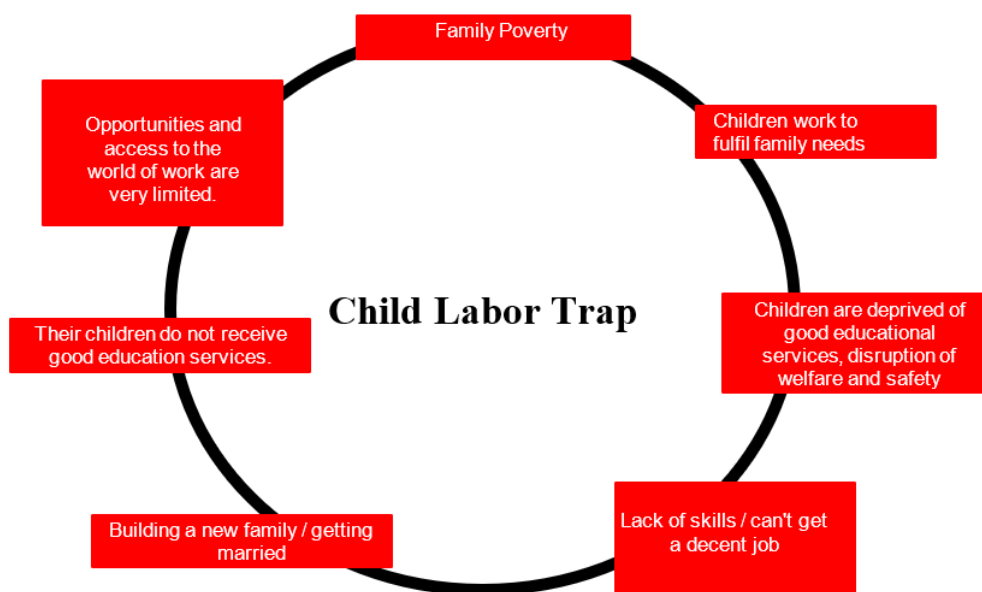


Figure 1. Child Labour Trap

Perlindungan Anak Terpadu Berbasis Masyarakat (PATBM)

Community-based integrated child protection is a movement of networks or groups of citizens at the community level working in a coordinated manner to achieve child protection goals. The establishment of PATBM is a community initiative to spearhead prevention efforts and build awareness of the community in creating an environment that is friendly and in favour of the best

interests of children. PATBM activities are conducted at the village and neighbourhood levels.

The scope of PATBM activities includes efforts to prevent violence against children and respond to violence against children through a network of service providers for children. In addition to functioning as a partner in case management, the PATBM network can also function as a partner in capacity building. At the village level, PATBM can partner with local organisations such as the PKK, Karang Taruna, Children's Forum, Posyandu cadres. At the district/city level PATBM can build networks with UPTD PPA, Legal Aid Institutions, and other social organisations.

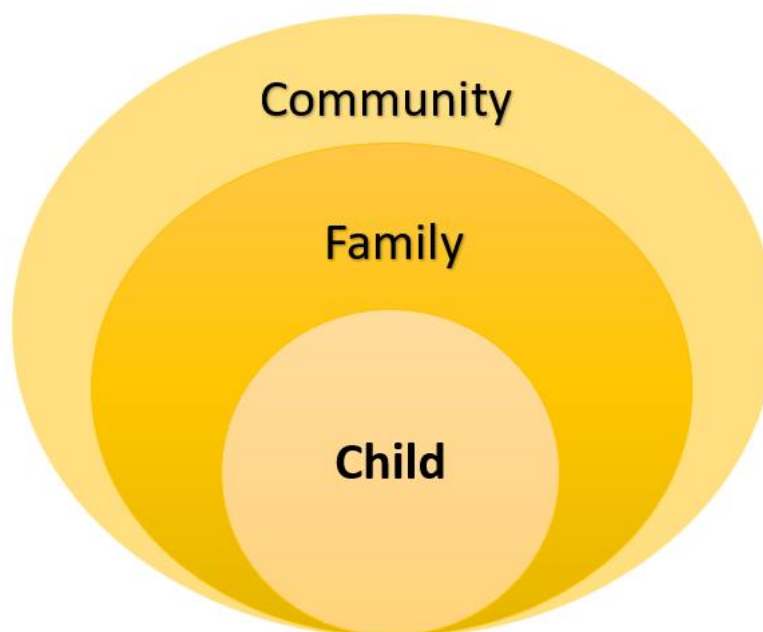


Figure 2. PATBM Scope of Work
Source: Kementerian PPA

PATBM activities include activities at the child level, family level, and community level (KEMEN-PPA, 2016) At the child level, PATBM activities are directed at improving children's ability to protect their rights, including protection from violence. Activities can include creative activities such as games, camps, and children's creativity competitions. At the family level, PATBM activities are directed at increasing the capacity of parents in providing care in accordance with the development and age of the child. In addition, PATBM also increases knowledge of the basic concepts of child protection and rights fulfilment. At the community level, activities are geared towards building awareness of the importance of a friendly, decent environment that favours the best interests of children. These activities can be packaged in discussions and socialisation activities that can be attended by all elements of the community.

Prevention and Management of Child Labour with Child Labour Monitoring and Remediation System (CLMRS)

One of the weaknesses of the method of monitoring child labour carried out by the government is that it only focuses on the formal sector so that it is not optimal in monitoring child labour in the informal sector such as small-scale agriculture, home industries. Supervision of child labour in the informal sector is quite challenging, ranging from limited personnel of labour inspectors, limited budgets, conservative supervision methods, and irregular and unregistered informal businesses that make it difficult to conduct supervision.

Supervision of child labour in the formal sector, including public-private enterprises that are registered and have clear rules, can facilitate supervision. All workers with various statuses are registered and their rights as workers are protected. Supervision will be improved by the existence of sanctions against labour violations.

The informal sector includes home-based businesses, traditional businesses, small-scale farming, other unstructured businesses, and household-based businesses. Children can work as hired workers, as well as permanent workers, without a work contract and without wages. Usually, they become household labourers whose wages are accumulated with other family members and managed by parents. This condition is very prone to violations of children's basic rights and is prone to violence for children. This condition also makes it difficult for labour inspectors to conduct supervision.

Socio-cultural conditions are also an obstacle for labour inspectors in conducting supervision. There are social norms that legitimise child labour in the form of children's devotion to parents or inheritance of skills from parents. In addition, the case of child labour is in a private area so there is a space that cannot be reached by the state, namely the relationship between children and parents.

To reach the informal sector, community-based strategies and approaches are needed. Involving the community as the main actor in prevention is the right strategy, because it can penetrate the boundaries of social norms and private space. This effort is carried out in a systematic and organised manner, so the first thing to do is to raise public awareness about the impact of child labour. After that, to build an organised movement, a child protection group was formed. Currently, the Ministry of Women's Empowerment and Child Protection encourages the formation of Integrated Community-Based Child Protection (PATBM) groups in each village and kelurahan. PATBM can be encouraged to spearhead the prevention and handling of child labour at the community level.

CLMRS is a child labour monitoring system that seeks to prevent and address child labour. This concept was adapted from Child Labour Monitoring initiated by the ILO (International Labour Organisation, 2005). The child labour monitoring system was first introduced by the ILO in 1990 as a tool to identify and monitor formal workplaces where child labour was present in the Bangladesh Garment Industry. According to the ILO CLM Brochure (2005, P1), CLM involves the development of a coordinated monitoring and multi-sectoral process that aims to cover all children within a given geographical area and is linked to the enforcement of national child labour laws. The main activity of CLM is to locate child labourers and identify their risks. The CLM then refers the child to service

agencies such as education and health, and monitors and ensures that the child has been properly assisted.

Several non-governmental organisations and businesses have also developed the concept of monitoring child labour. Save the Children, International Cocoa Initiative with Nestle, Hersey, ECLT Foundation, etc. are organisations that have developed and applied CLMRS in the agriculture and plantation sectors. Nestle claims that their CLMRS can reduce child labour by 50%. The main principle of CLMRS is the involvement of various parties in monitoring and remedying child labour. There are 5 stages in the implementation of CLMRS: identification, assessment, development of remediation plans, remediation implementation, and monitoring and evaluation.

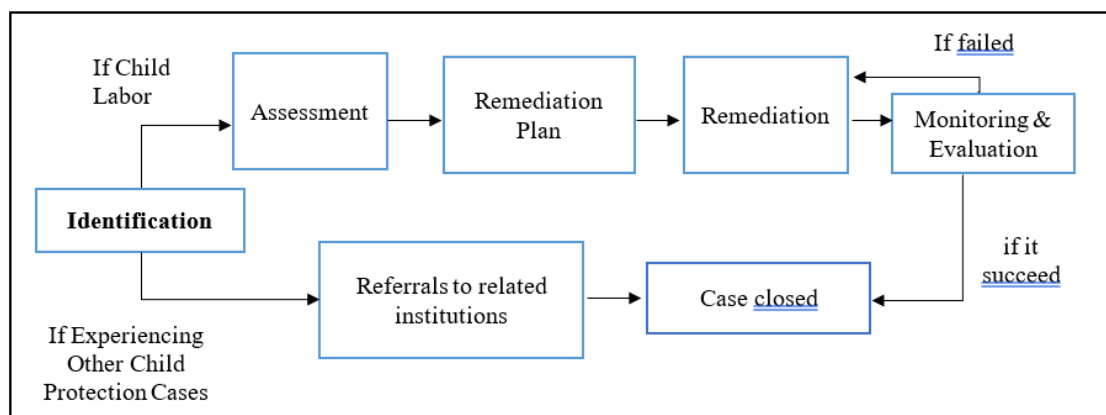


Figure 3. CLMRS Works

CLMRS can also be understood as a voluntary social audit carried out by community groups whose members have a responsibility for child welfare. The involvement of other parties is also key to the success of CLMRS through the distribution of tasks according to their respective capacities, meaning that each party can take part in the CLMRS stages. The supply chain community can act as a monitoring party and at the same time play a role in remediation activities. If they find children who are indicated to be child labourers, then they report to PATBM for further action. The government and its service institutions such as schools, vocational training centres, health facilities, etc. can function as referral institutions for remediation. The business world can play a role in remediation such as financial support for poor families, scholarships, and carrying out capacity building to prepare children to enter the workforce according to their age, including building a commitment not to engage in child labour practices.



Figure 4. Structure of CLMRS

CLMRS is implemented by encouraging community groups as the main actors. Since 2020, there have been 8 PATBMs in Wajo District, South Sulawesi, that have started to carry out movements to prevent and handle child labour. The movement received support from Save the Children Indonesia. The stages of CLMRS implementation begin with raising awareness of the impact of child labour through socialisation activities and regular meetings. The next stage is to train community groups to be able to implement CLMRS tools, and then seek parties to be involved in remediation activities.

The CLMRS implemented by PATBM is very effective in identifying and locating children involved in child labour by encouraging the participation of local actors such as agricultural supply chain communities, educators, religious leaders, local government, and the business world, each of which has a role in the CLMRS. For example, in Ghana in the cocoa plantation area, the Ghanaian government led the implementation of Community Child Labour Monitoring (CCLM) as a child labour monitoring and remediation tool to free children from the worst forms of child labour and trafficking (Owusu-Amankwah et al., 2014).

The CLMRS implemented by PATBM in Wajo District, South Sulawesi, has succeeded in identifying forms of child labour, especially in the agricultural sector, household businesses, construction, and several other forms of hazardous work. In general, children are involved in hazardous work such as spraying pesticides and fertilising, using sharp objects, transporting agricultural products by motorbike, and working long hours. These findings are then followed up by visiting the homes of children identified as workers to conduct assessments,

discuss and agree on remediation plans with the family. The remediation plan is then coordinated with parties related to the remediation plan.

Once the plan is agreed, remediation is implemented according to the needs of the child. Children who lose school time as a result of child labour will be encouraged to return to school, children who use dangerous objects and tools will be planned for replacement of tools or cessation of activities, children or families who need economic improvement support will be facilitated to get social assistance or get capital assistance as well as financial literacy support. At the remediation implementation stage, PATBM can distribute tasks to the parties according to their respective capacities. After the implementation of remediation, the next stage is the monitoring and evaluation stage. This stage aims to monitor and evaluate the implementation of remediation. If the remediation that has been carried out does not provide maximum results, then PATBM together with the beneficiary families will re-develop a remediation plan by considering the results of monitoring and evaluation. All processes in the CLMRS are recorded and recorded by each PATBM administrator.

Social capital is an important resource for creating or shaping a new social order. Social capital arises from the idea that humans cannot limit the problems faced individually, cooperation and togetherness are needed. The concept of social capital was first introduced by Hanifan (Santoso, 2020), the social capital in question is not in the form of money but togetherness to form a close-knit social group. Bouerdieau stated that social structure and function can only be understood through social capital. Coelman (1988) states that social capital is productive, which is responsible for creating human capital.

In CLMRS activities, the parties have the same view that child labour will have a negative impact on children, so the parties agree to prevent and handle child labour. The remediation of child labour provides sufficient space for social capital. In planning the remediation, PATBM and the families of child labourers jointly agreed on the remediation plan. The families put their trust in the remediation plan proposed by PATBM. Remediation also provides space for various parties to provide support in accordance with the interests of the child, support is provided on the basis of solidarity in the community. The school will provide educational support for children who have dropped out of school, employers can provide training and capital assistance, and the government facilitates the various needs of children to be able to escape from child labour status.

CONCLUSION

CLMRS as a community-based child labour monitoring and remediation system is very effective in preventing and eliminating child labour. The involvement of PATBM and various parties in the community strengthens the function of CLMRS in identifying and handling cases of child labour in the informal sector. CLMRS has succeeded in encouraging stakeholders to be involved in child labour prevention and management activities. The parties also feel that they have a responsibility to ensure the fulfilment of children's rights and are involved in the protection of children's rights. PATBM as the main actor in CLMRS works well, they are able to identify cases of child labour in areas that are difficult to reach by

the government. PATBM is also able to change the community's perception of child labour, which has normalised children involved in child labour.

BIBLIOGRAPHY

- Ango, T. G., Börjeson, L., Wisborg, P., Senbeta, F., & Alem, H. (2022). Coffee, child labour, and education: Examining a triple social–ecological trade-off in an Afromontane forest landscape. *International Journal of Educational Development*, 95(October). <https://doi.org/10.1016/j.ijedudev.2022.102681>
- Cigno, A. (2016). Child Labor. In G. Ritzer (Ed.), *The Wiley-Blackwell Encyclopedia of Globalization, First Edition* (1st ed., pp. 1–3). Blackwell Publishing Ltd. <https://doi.org/10.1093/0195305191.003.0016>
- Fumagalli, L., & Martin, T. (2023). Child labor among farm households in Mozambique and the role of reciprocal adult labor. *World Development*, 161, 1–17.
- Hurst, P. (2022). Special Session 45 Supporting a breakthrough against child labour and hazardous work in agriculture. *Safety and Health at Work*, 13, S69. <https://doi.org/10.1016/j.shaw.2021.12.949>
- ILO and UNICEF. (2021). Child labour Global Estimates, Trends And The Road Forward. In *UNICEF*.
- KEMEN-PPA. (2016). *PEDOMAN PERLINDUNGAN ANAK TERPADU BERBASIS MASYARAKAT (PATBM)* (1st ed.). Kementerian Pemberdayaan Perempuan Dan Perlindungan Anak Republik Indonesia.
- Mizushima, A. (2021). Child labor, social capital, and economic development*. *Review of Development Economics*, 25(3), 1648–1667. <https://doi.org/10.1111/rode.12785>
- Morrow, V. (2015). Child labor. In *The Blackwell Encyclopedia of Sociology* (Vol. 181, pp. 1–3). John Wiley & Sons, Ltd. DOI: <https://doi.org/10.1002/9781405165518.wbeosc028.pub2>